

 **COMMENCAL**

**FIT YOUR FCB
MUDGUARDS**





IN THE SET

- Front mud guard
- Rear mud guard
- 2 fixing rods
- 4 rod end caps
- 2 sets of rod ties (2 rectangular plastic pieces + 1 small screw)
- Rear mud guard hook
- 6 M5x10mm screws
- 1 M6x15mm screw
- 1 M6 nut
- 1 M6 washer
- 1 spacer

TOOLS REQUIRED FOR ASSEMBLY

- 4, 5 & 6mm Allen keys
- 10mm open-end wrench
- Small Phillips screwdriver

DETAILS REGARDING THE SMALLER PIECES OF THE SET



1/ 2 fixing rods



2/ 4 rod end caps



3/ Set of rod ties (x2 in the kit)



4/ Spacer, M6x15mm screw, M6 nut, M6 washer



5/ 6 M5x10mm screws



6/ Rear mud guard hook





STEP 1

INSTALLING THE FRONT MUD GUARD
Remove the front axle and take the front wheel off the bike.



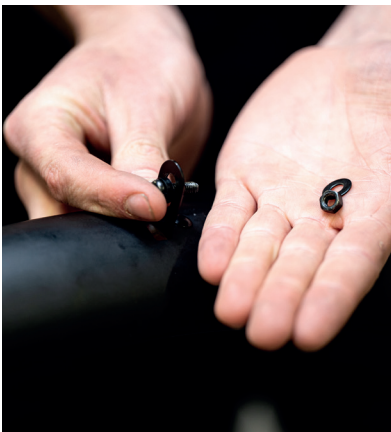
STEP 2

Clip together the two rectangular plastic pieces of the front rod attachment.
Clip the front rod end cap into its slot, making sure the hole is facing the top of the guard.



STEP 3

Fix the rod into its clip, then tighten the small screw using a small Phillips screwdriver.



STEP 4

Pass the M6x15mm screw through the hook of the mudguard.
Have the washer and nut to hand.

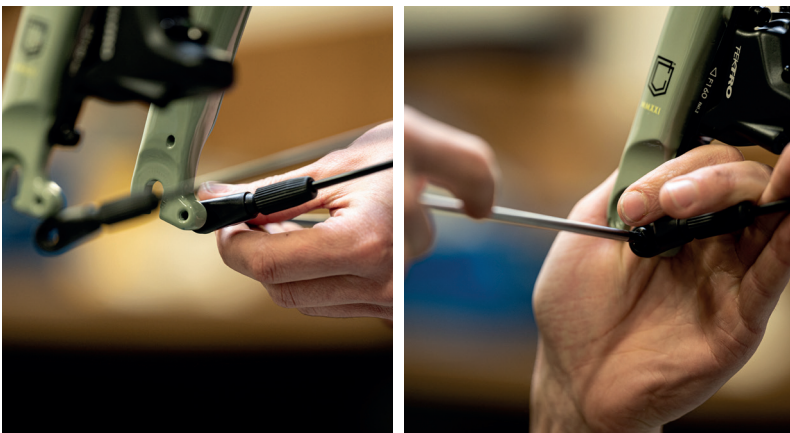




STEP 5

Place the hook with the screw in the fork steerer so that the screw comes out of the hole at the back of the fork, which is there for this purpose.

Using a 5mm Allen key, hold the screw against the fork. Place the washer and nut from behind and tighten everything using a 10mm open-end wrench.



STEP 6

Fit the two ends of the rod to the bike. The height of the mud guard is adjustable - you can choose to push the rods more or less into the end caps before screwing them in.

Get two M5x10mm screws and a 4mm Allen key.

Secure the two legs of the rod on either side of the fork in the inserts provided for this purpose.



STEP 7

Using a 5mm Allen key, you can now loosen the screw that secures the top of the mud guard and adjust the height of the mud guard in relation to the tyre. Tighten everything up.





STEP 8

FITTING THE REAR MUD GUARD

Using a 6mm Allen key, remove the rear wheel axle and then the wheel.

Take the rear mud guard and the clip. Pass the latter over the mud guard as shown in the image - hooks up, then slide it towards the middle of the guard.



STEP 9

After assembling it, clip the rod clip into its slot, making sure the hole is facing the top of the mud guard.

Fix the rod into its clip then tighten the small screw using a small Phillips screwdriver.



STEP 10

Secure the clip in the bridge insert between the seat stays using the spacer, the M5x10mm screw and a 4mm Allen key. Also, fix the bottom of the mud guard in the bridge insert between the chain stays with an M5x10mm screw and the same Allen key.





STEP 11

Fit the two rod ends to the end of the rod. Get the last two M5x10mm screws and a 4 Allen key. Fix the two legs of the rod onto the brackets, in the inserts provided for this purpose.



STEP 12

Place the wheel back on your bike.



STEP 13

Adjust the height of the mud guard in relation to the height of the tyre so it's level with the bridge screw and the rod ends.





To contact us

Phone: (+ 376) 73 74 75

Website : <https://www.commencal-store.co.uk/>

Information : info@commencal.com

Communication / Media - Press : media@commencal.com

International Sales : export@commencal.com

Accounting : accounting@commencal.com

Customer Service

COMMENCAL Bicycles
Erts - AD400 - La Massana
Principat d'Andorra

From Monday to Friday - 9h to 13h & 14h to 19h (CET)

Mail : customerservice@commencal.com

Phone : (+376) 73 74 93